



**LCU**  
LEBANESE CANADIAN  
UNIVERSITY



**ADMISSIONS  
GUIDE**

**YOUR ULTIMATE GUIDE**  
FACULTIES • PROGRAMS • MAJORS

**2024 - 2025**

**ENVISION YOUR  
FUTURE**

# TWO CAMPUSES



AINTOURA

HADAT



AINTOURA KESROUAN

HADAT BEIRUT



## GREEN HADAT - CAMPUS

## FINANCIAL AID PROGRAMS

2000<sup>+</sup>

STUDENTS HAVE  
BENEFITED FROM  
OUR SCHOLARSHIP  
PROGRAMS.

# FACULTIES



## INTERNATIONAL PARTNERSHIPS THROUGHOUT THE YEARS



UQAM UNIVERSITÉ DU QUÉBEC  
À MONTRÉAL



UDS UNIVERSITÉ DE SHERBROOKE



UDB UNIVERSITÉ DE BORDEAUX



GEM GRENOBLE ECOLE DE  
MANAGEMENT



IPAC INSTITUT DES PROFESSIONS DES  
AFFAIRES ET DU COMMERCE



EHG ÉCOLE HÔTELIÈRE  
DE GENÈVE



UJM UNIVERSITÉ JEAN MONNET  
MEMBRE DE L'UNIVERSITÉ DE LYON



CEDS CENTRE D'ÉTUDES  
DIPLOMATIQUES ET STRATÉGIQUES

## FREE ON CAMPUS



WIFI



MEDICAL CONSULTATION

## LCU OFFERS

250<sup>+</sup>

YEARLY JOBS & INTERNSHIPS  
FOR ALUMNI, GRADUATE  
& UNDERGRADUATE STUDENTS



JOIN OUR  
SPORTS CLUB





# LCU AT A GLANCE

The Lebanese Canadian University - LCU, established in 2000 in Aintoura - Kesrouan, is a leading Lebanese institution of higher education recognized by presidential decrees. In 2015, LCU expanded its presence by establishing a new campus in Hadat - Beirut. This campus earned the prestigious GOLD LEED (Leadership in Energy and Environmental Design) certification, reflecting LCU's commitment to environmental preservation and sustainable development.

The Lebanese Canadian University - LCU celebrates its silver jubilee, marking 25 years of commitment to excellence in education, offering innovative programs that are recognized both nationally and internationally, building strong partnerships with reputable university institutions, which have contributed to its growth and reputation as a prominent educational entity in Lebanon.

The Lebanese Canadian University - LCU has constantly worked to provide its students with the skills, both academic and professional, to play an active role in a globalized world. It aims to cultivate excellence in a broad range of fields and it offers top quality education leading to national and international degrees.

After receiving the ISO 9001:2008 certification, LCU obtained the ISO 9001:2015 certification in September 2017. Other national and international accreditations that will promote the highest levels of education, are undergoing. The academic value LCU provides to its students allows them to gain a practical experience that will help them integrate into the market. In its three faculties, LCU offers the educational environment supported by a recreational environment that boosts student life and promotes human relationships.

Beyond scientific knowledge, the contributions of an education at LCU can be summarized by:

- An excellence in education.
- Innovative North American programs in bond with the labor market.
- Partnerships with leading international universities.
- A personalized and individual academic supervision.
- A fast adaptation to the new trends and technologies in the employment market, thus maximizing integration opportunities of graduates.
- Flexible schedules in order to accommodate working students.
- A high placement rate of its graduates in national and international companies.
- A sound and stimulating student life within a social and cultural commitment.

Students also enjoy:

- Modern and accessible infrastructures (libraries, laboratories, computer labs, residence halls, student life services, sports complex... etc)
- Competitive and reasonable tuition fees.

# MISSION

The Lebanese Canadian University - LCU is devoted to excellence in teaching a wide range of disciplines that provide rich learning and research programs aiming to sculpt the students' academic, professional and multidisciplinary skills and to develop promising leaders and entrepreneurs who foster an outstanding difference in our world in a variety of fields.

LCU remains faithful to its main mission by creating and sustaining an innovative education experience within the context of a thought-provoking environment committed to serving students from diverse backgrounds. Thanks to its quality education, international academic relations, partnership agreements, LCU prepares its students for great job opportunities as it integrates them into a unique communication and work environment on local, regional and international levels in order to nurture their academic and professional future.

As part of its mission, LCU endeavors to align its values, practices, resources and commitments to create stronger bonds with its students, to offer them the necessary support as well as the perfect environment to embrace their personal, academic and professional change and development.

# VISION

Carried forward by a deep-rooted desire and a hopeful breeze witness of our perseverance, we have set our sights high enough to reach farther. At LCU we dream big and promote diversity, respect for human dignity and rights. We move forward steadily paving the road of success for our students by preparing them to be future leaders who can exercise reason upon knowledge and shape a world of truth, justice and freedom. Guided by our yearning for knowledge and driven by hope of a better future we have strived to make a great impact on higher education.

We will put in our best effort to succeed in our mission and make our university a global renown in the field of higher education.

Some say that “the lives of the many depend on the dedication of the few”. Our enthusiasm and motivation to explore new horizons in every field are the engines behind our students' humility and ardor in overcoming life's challenges, all while proving their worth and acquiring knowledge, skills and attitudes.

## THE UNIVERSITIES ASSOCIATION OF LEBANON



Universities  
Association  
of Lebanon

UAOLB is the body representing leading public and private universities in Lebanon. It helps develop strategies and policies to advance scientific research and higher education in Lebanon. It aims at maximizing the 19 member universities' contribution to Lebanon's social, cultural and economic heritage.

## THE AGENCE UNIVERSITAIRE DE LA FRANCOPHONIE



AUF is an international association comprising 812 universities that use the French language in 104 countries. It is one of the world's largest higher education and research associations. The AUF has a network of 62 offices, branches and digital campuses in 40 different countries.

## THE EUROPEAN FOUNDATION FOR MANAGEMENT DEVELOPMENT



EFMD is an international, not-for-profit, membership organization of business schools and corporations, based in Brussels, Belgium. It is recognized globally as an accreditation body for quality & impact assessment in management. It has nearly 900 member organizations in 86 countries.

## THE ASSOCIATION TO ADVANCE COLLEGIATE SCHOOLS OF BUSINESS



AACSB is one of the largest networks for higher education, organization and governmental bodies. It is dedicated to promote higher education in the business field. AACSB is a global association of more than 1,400 member organizations in over 90 countries.

## THE INTERNATIONAL ACCREDITATION COUNCIL FOR BUSINESS EDUCATION



IACBE promotes and recognizes excellence in business education in institutions of higher education worldwide through specialized accreditation of business programs. It accredits over 2,200 programs at the associate, bachelor, master, and doctoral levels with more than 200 member schools in nearly 30 countries worldwide and is recognized by the Council for Higher Education Accreditation (CHEA).

## THE INTERNATIONAL FEDERATION OF SURVEYORS



FIG is the premier international organization representing the interests of surveyors worldwide. It is a federation of the national member associations and covers the whole range of professional fields within the global surveying community. Founded on July 18, 1878 in Paris, FIG is a UN-recognized non-government organization (NGO), representing more than 120 countries throughout the world.

## THE ARAB UNION OF SURVEYORS



AUS is a non-governmental organization, the main goal of which is to meet the common expectations of the topographical land surveyors and to strengthen the ties that are inherent to their belonging to the Arab region.

## THE INTERNATIONAL ORGANIZATION FOR STANDARDIZATION



ISO is an international non-governmental organization with its headquarters in Geneva, Switzerland. According to its statutes, ISO's mission is "to promote global standardization facilitating exchanges of goods and services between nations and to reach an understanding in the intellectual, scientific, technical and economic fields".





# PLAN



**YOUR FUTURE**

## **FACULTY OF BUSINESS ADMINISTRATION**

The Faculty of Business Administration equips students with the fundamentals of business and leadership in local and international markets. This cutting edge knowledge will be threshold to higher business levels coupled with immense opportunities to white-collar jobs.

The Faculty has already established an outstanding reputation, based not only on the academic involvement of its students, the value of its diplomas, but also on its flexibility towards candidates wishing to achieve or round off their education in the business administration arena.

# GET YOUR BACHELOR OF BUSINESS ADMINISTRATION - BBA

MAJORS	CREDITS & DURATION
FINANCE	<div> 105 CREDITS</div> <div> 3 YEARS</div> <div>DAY &amp; NIGHT SHIFTS</div>
MARKETING	
HUMAN RESOURCES MANAGEMENT	
BUSINESS COMPUTING	



# DESIGN

YOUR FUTURE






## FACULTY OF ARTS & SCIENCES

Choosing LCU for your education in the field of sciences means being nestled in the heart of a new campus equipped with modern laboratories, and profiting from new information and communication technologies as your learning tools. It also means being confident that your education is firmly grounded in the employment or research environments.

As for our arts majors, graphic design and interior design, LCU equips students with the essential skills to excel in these dynamic fields. Graphic design students delve into visual communication, typography, and digital media, while interior design students explore spatial planning, materials, and aesthetics. Both programs emphasize practical application and industry-relevant projects, preparing graduates for successful careers in the creative industries.

In fact, the Faculty of Arts and Sciences enables its students to explore a wide range of academic fields thanks to its dynamic programs that help them acquire and develop their research abilities at the pace of the rapid evolution of technology.

# GET YOUR BACHELOR OF ARTS & SCIENCES

MAJORS	CREDITS & DURATION
 <b>INTERIOR DESIGN</b> <i>Enables graduates to join the Lebanese Syndicate of Interior Designers.</i>	<p> <b>105 CREDITS</b></p> <p> <b>3 YEARS</b></p> <p><b>DAY &amp; NIGHT SHIFTS</b></p>
 <b>GRAPHIC DESIGN</b> <i>Enables graduates to join the Lebanese Graphic Design Syndicate (SPGIL)</i>	
<b>COMPUTER SCIENCE</b>	
 <b>NUTRITION AND DIETETICS</b> <i>Enables graduates to join the Syndicate of Dietitians in Lebanon.</i>	
<b>BIOLOGY</b>	





# CONNECT

YOUR FUTURE


## FACULTY OF HUMANITIES

The Faculty of Humanities aims at awakening students' appreciation of the word itself and of the importance of precision in journalism, communication, translation and diplomatic studies.

Ambitious and open to the world, its cultures and differences, the Faculty's programs have been designed to meet the challenges of a constantly evolving marketplace.

It is worth noting that LCU is the first university in Lebanon to offer the PHD program in International Relations and Diplomacy in partnership with CEDS (Centre d'Etudes Diplomatiques et Stratégiques).

# GET YOUR BACHELOR OF HUMANITIES

MAJORS	CREDITS & DURATION
<div> <b>JOURNALISM</b></div> <div><i>Enables graduates to join the Lebanese Syndicate of Press Editors.</i></div>	<div> <b>105 CREDITS</b></div> <div> <b>3 YEARS</b></div> <div><b>DAY &amp; NIGHT SHIFTS</b></div>
<div> <b>TRANSLATION AND LIVING LANGUAGES</b></div> <div><i>Enables graduates to join the Association of Certified Public Translators of Lebanon</i></div>	
<b>COMMUNICATION</b>	
<b>STRATEGIC AND DIPLOMATIC STUDIES</b>	

# BACHELOR'S DEGREE

## ADMISSION REQUIRMENTS



**Lebanese Baccalaureate or its equivalent.**



**Accredited Freshman.**



**The consent of the University's Academic Advisory Committee after reviewing the applicant's file.**

**YOUR  
FUTURE  
LOOKS  
BRIGHT.**

# FRESHMAN

**SCIENCES**  
**SAT (950)**

**ARTS**  
**SAT (870)**





# FRESHMAN

## ADMISSION REQUIREMENTS

- Hold a secondary school certificate or a diploma based on twelve years of english schooling. The certificate or diploma must be awarded by governments or recognized private schools.
- Obtain a certificate of exemption from Arabic or a certificate of permission to pursue academic studies on the basis of a foreign non-Lebanese program, issued by the Equivalence Committee of the Lebanese Ministry of Education and Higher Education to candidates who have demonstrated to have lived or studied in a foreign country for a minimum of two years of secondary education or three years of elementary education.

Take the required SAT test prior to their admission to the Freshman class.

MAJORS	CREDITS & DURATION
ARTS	 105 CREDITS
SCIENCES	 1 YEAR ENGLISH

# BECOME AN ENTREPRENEUR

## THROUGH ACQUIRING:

**01** COMMUNICATION  
SKILLS

**02** DIGITAL & AI  
COMPETENCE

**03** LEARN TO LEARN

**04** SENSE OF  
INITIATIVE

**05** CIVIC & SOCIAL  
RESPONSIBILITY

**06** CULTURAL  
KNOWLEDGE

**07** GROUP WORK

**08** COMMERCIAL  
CONSCIOUSNESS

**09** SENSE OF  
ANALYSIS

**10** SELF MOTIVATION

**11** PLANIFICATION  
& ORGANIZATION

**12** TIME MANAGEMENT

**YOUR  
FUTURE  
STARTS  
TODAY.**



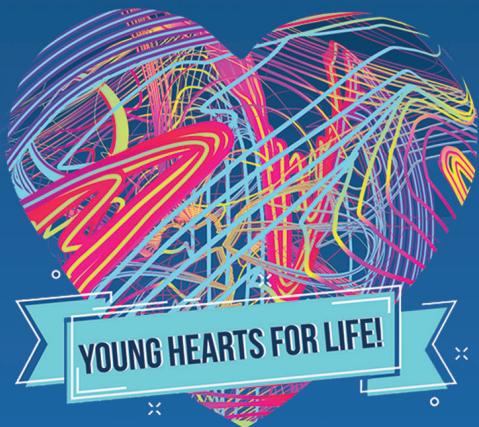
# GET SPOTTED AT LCU CAREER FAIR





# HEALTH DAY

IN COLLABORATION WITH YOHAN FOUNDATION





# الفهود والجيش قوة وقوى









# JOIN OUR LCU BASKETBALL TEAM



# JOIN OUR LCU FOOTBALL TEAM







# MARKETING MANIA





# MOTHER'S DAY AT LCU



# MOTHER'S DAY AT LCU





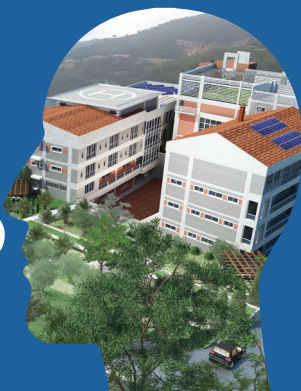
# MOTHER'S DAY

## IN COLLABORATION WITH

#CHRISLIFESAVINGJOURNEY



# 2024 LCU OPEN DOORS

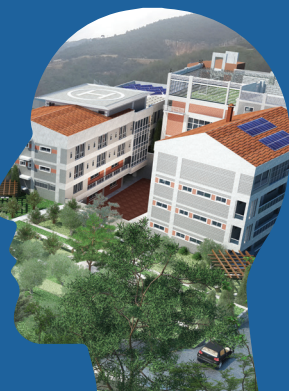


LCU OPEN DOORS





# 2024 LCU OPEN DOORS



# 2024 COMMENCEMENT CEREMONY

## #LeadersforChange

Class Of  
**2024**





# 2024 COMMENCEMENT CEREMONY

## #LeadersforChange

Class Of  
**2024**



# 2024 COMMENCEMENT CEREMONY

#LeadersforChange

Class Of  
**2024**





# JOIN LCU

[www.lcu.edu.lb](http://www.lcu.edu.lb)

## MAIN CAMPUS

Aintoura - Kesrouan

T : +961 9 232 183/185 - 233 183

M: +961 71 499 538 

[admissions@lcu.edu.lb](mailto:admissions@lcu.edu.lb)

## BEIRUT CAMPUS

Hadat - Saida Old Road

T : +961 5 472 499/588

M: +961 70 499 538 

[admissions.hadat@lcu.edu.lb](mailto:admissions.hadat@lcu.edu.lb)

P.O.B. 32 Zouk Mikael, LEBANON

